

ControlScope Manager

Daintree Wireless Solution

ControlScope Manager (CSM) is part of the Daintree product portfolio, an open networked wireless controls solution for lighting and building control, monitoring, and optimization. Daintree controls provide a highly scalable solution to address evolving environmental regulations and transform spaces into intelligent environments for buildings of all sizes.

Consisting of three components, Daintree includes sensors and controls at the edge, an open API cloud platform, and software apps to help facility managers make decisions based on how space and assets are actually being used using a data-rich sensor network. Benefits of adding wireless Daintree controls include:

- Up to 50% Energy savings across lighting, HVAC, plugload, fans and more
- Visibility into energy usage, trends and insights to optimize operations
- Automated demand response, superior comfort and lower maintenance expense
- Regulatory compliance with Title 24; 2005 EnergyPolicy Act; 2007 Energy Independence and Security Act; 2009 DOE Regulations.

Daintree Wireless Solutions Product Overview

ControlScope Manager is the industry's leading wireless controls solution for smart buildings, delivering dramatic energy savings and operational efficiency improvements in a simpler, more cost-effective way than ever before. It is designed for facility managers and building owners who are striving to deliver more, but are constrained by limited budgets and outdated technology. Make your facilities run smarter, more efficiently, and with increased productivity:

- Enables smart buildings that can run on auto-pilot
- Reduces operating expenses
- Increases occupant comfort and productivity
- Provides high-ROI sustainability
- Simple, flexible, and cost effective

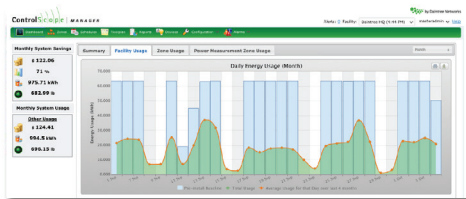
ControlScope Manager (CSM) has an easy-to-use graphical user interface with advanced functionality for real-time energy management and building control. CSM provides web-based user access to the ControlScope platform for all system configuration and device management, enterprise-wide building control, and energy measurement and monitoring functions needed to deliver intelligent building control:

- Dashboard view of system-wide and individual location conditions



ControlScope Manager

- Intelligent and powerful building control strategies
- Experimentation for aggressive tuning and savings
- Energy management and usage reporting for Measurement & Verification (M&V)
- Remote system monitoring, alarm generation and troubleshooting
- Automated and remote maintenance
- Integrate with Building Management Systems using industry standard BACnet
- Demand and load management with smart grid connectivity
 - Built-in automated Demand Response (OpenADR)



Key Functions	Dashboard	Instant, real-time summary of system status and energy usage/savings
	Zones	Monitor and edit building control zones
	Schedules	Set and manage lighting and thermostat control schedules
	Floorplan	Floorplan heat map for visual monitoring and configuration of building control zones.
	Reports	Generate and save energy management reports
	Devices	Configure and query status of building control devices
	Configuration	System management and commissioning wizards
	Alarms	Detailed log of events and alarms
	Web Browser Compatibility	Firefox® v20 or later Internet Explorer® v9, 10, 11 Chrome® v39 or later

Software Updates & Support (SUS) includes:

- Software Updates
- Technical Support (Tier 2)

First year is included with Node License purchase.

End User Support includes:

- End User Software Training
- Software Application Support

Optimization Service includes:

- Monthly key energy and performance reports
- Monthly alert summary for fault detection
- Post-install support for re-configuration and adjustments
- Quarterly configuration review & optimization recommendations



ControlScope Manager

ControlScope Deployment options	ControlScope	Hosted	Lighting BEMaaS	Enterprise BEMaaS
	Software Features			
	Lighting Control	✓	✓	✓
	Plug Load Control	✓		✓
	HVAC Control	✓		✓
	General Purpose Control	✓		✓
	Environmental Monitoring	✓		✓
	Power Meter Integration	✓		✓
	Multi-Facility Capability	Optional License	✓	✓
	Demand Response	Optional License		✓
BACnet Server				
Automated Offsite Backup	✓	✓	✓	
Access Anywhere	✓	✓	✓	
Licensing				
Software Instance	Server Purchase	Subscription Fee		
Managed Nodes	Perpetual Purchase	Subscription Fee	Subscription Fee	
Software Updates & Technical Support (Tier 2)	Maintenance Fee (Includes Server Hosting)	Included		
End User Support	Subscription Fee (Optional)	Subscription Fee (Optional)		
Optimization Service	Subscription Fee (Optional)	Subscription Fee (Optional)		

The following table highlights the key differences between the different ControlScope deployment models:

	Hardware Purchase	Software Purchase	Software Development	End User Access and Connectivity	Software Updates and Tier 2 Support
Hosted	Upfront	Upfront	Dedicated server installed and hosted by Daintree Networks	Web browser via internet	Required maintenance fee paid yearly (or multiyear), includes hosting
BEMaaS	Upfront	Subscription fee (yearly or multi-year)	Secure cloud application	Web browser via internet	Included



ControlScope Manager

Warranty

Current offers a limited Warranty across its Daintree Portfolio. The table below summarizes the Warranty terms. For additional information, please review the Limited Warranty Document on the Daintree Homepage.

Component	Warranty Period	Coverage Details
Daintree Software	1 year (IoT Cloud installed Software) Subscription term (SaaS) 3 years	GE warrants that as long as all applicable fees due are paid, Daintree Software will substantially conform to the applicable published documentation and published specifications for the Warranty Period.
System Controller	3 years	100% parts coverage. Warranty for non-Daintree software (such as operating system software) is provided by the respective software GEGE; GE makes no warranty with respect to no-Daintree software.
WACs	5 years	100% parts coverage
Wireless Adapters	5 years	100% parts coverage
Wireless Devices	5 years	100% parts coverage, excluding batteries
Wireless Thermostats	2 years	100% parts coverage

Product Code	Product Description
N25	Regular Node License Bundle (25 regular wireless nodes)
N25-H	Regular Node License Bundle, Hosted System (25 regular wireless nodes)
T5	Thermostat Node License Bundle (25 thermostat wireless nodes)
T5-H	Regular Node License Bundle, Hosted System (25 thermostat wireless nodes)
CS-MFM	Multi-Facility Management (per additional facility)
CS-DR	Demand Response (per system)
SUS5-12M	Software Updates and Support, On-Premise -1 Year (5 wireless nodes)
SUS5-H-12M	Software Updates and Support, Hosted -1 Year (5 wireless nodes)
EUS5-12M	End User Support -1 Year (5 wireless nodes)
OPT5-12M	Optimization Service -1 Year (5 wireless nodes)
CS-BAC-1000	BACnet Server (up to 1000 nodes)
CS-BAC-5000	BACnet Server (up to 5000 nodes)
CS-BAC-UNL	BACnet Server (unlimited nodes)
BEMAAS-INST	BEMaaS Instance Subscription, 1 year
BEMAAS10-LGT	Lighting BEMaaS Nodes Subscription, 1 year (10 wireless nodes)
BEMAAS10-ENT	Enterprise BEMaaS Nodes Subscription, 1 year (10 wireless nodes)

Call **1.844.378.4960** • products.currentbyge.com